

Maldives Land and Survey Authority,

MINISTRY OF HOUSING AND INFRASTRUCTURE

Ameenee Magu, Maafannu, Male', 20392, Maldives.

Office (PABX): +(960) 3004300, Fax: +(960) 3004254

Email: survey@mhe.gov.mv

Web: www.surveyofmaldives.gov.mv, www.mhe.gov.mv



CONTROL POINT DETAILS		Station Number 5094
Coordinate Information		
Geodetic	Grid	
WGS 84	UTM Zone43	
Lat: 3°38'40.33284"N	E: 331982.9908m	
Long: 73°29'13.95505"E	N: 402977.3037m	
Ellp Height: -92.183	Orth Height: 1.622	
Island Name: Dhiggiri	Date: 30th May 2012	

Monument description & method of survey:

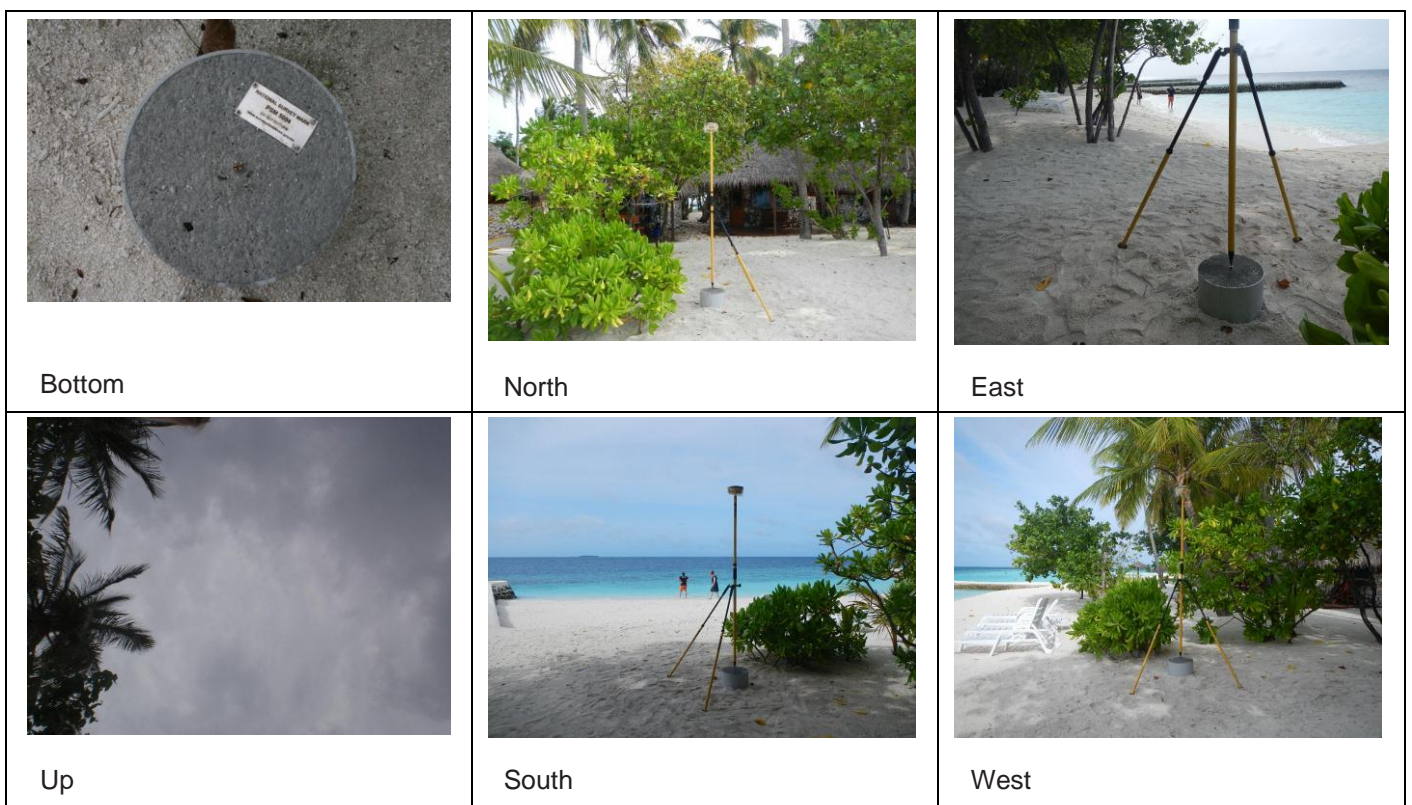
PSM type: PSM type A (finish level approx. 150mm above ground level)

PSM was established using Topcon HiperII DGPS system. Static survey method was used for establishing the horizontal coordinates. Three PSM were set at site and data collected for three triangles. Approximately 6hrs 01min of data collected for line PSM 5094-5095, 1hr 53min for line PSM5095-5096 and 2hrs 02mins for the line PSM5094-5096. Correction and adjustment are made using Topcon Tools software. MSL established by transferring water level (water level taken at 30th May 2012 13:23) and reducing to MSL using Hulhule predicted tide data set.

General site condition & access:

The PSM 5094 is located at the southern side of the island near Beach Villa number 33. The PSM5094 is in line of sight to PSM5095 located at the northern side of the island near the bar. The PSM can be accessible from the beach. Sky view is clear of obstruction apart from West, North West, North and North Eastern side (obstructing at 50° elevation angle)

Owner: D.I Resorts Pvt Ltd. The resort management takes full responsibility for safeguarding the PSM.

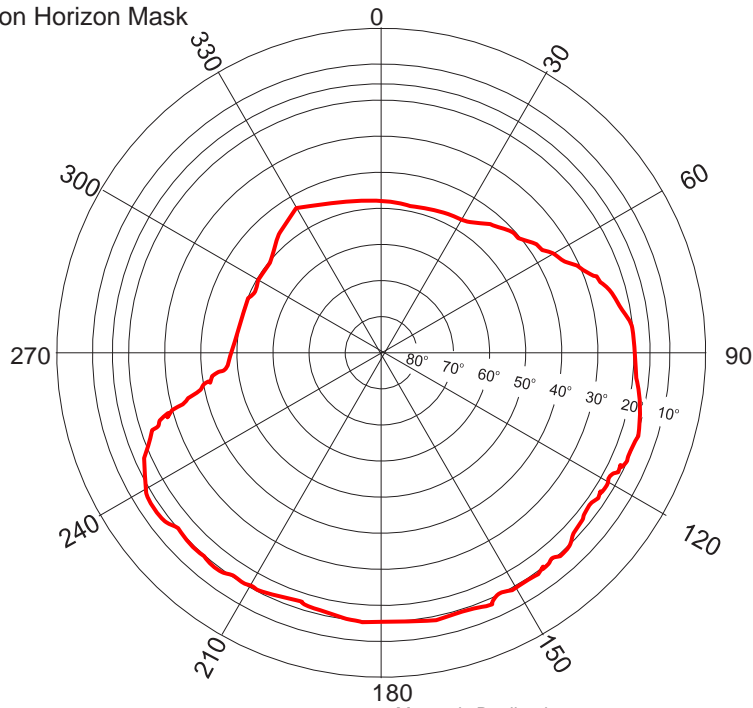


SITE INFORMATION

Station Number

P	S	M	5	0	9	4
---	---	---	---	---	---	---

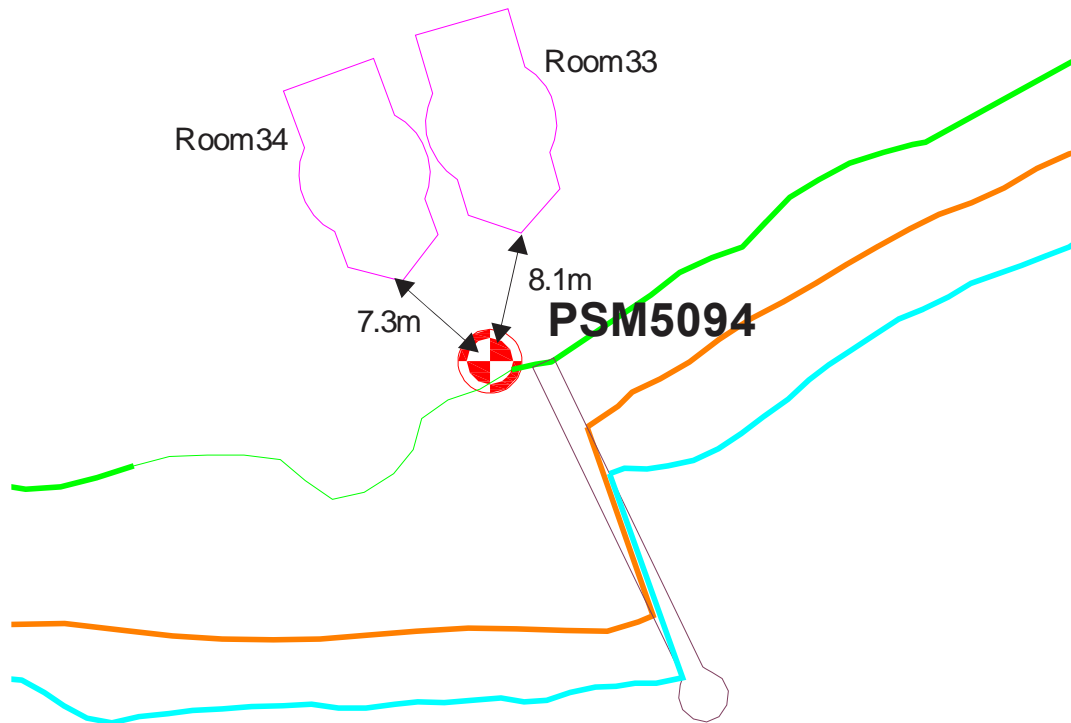
Station Horizon Mask



Height above Marker that horizon was mapped from 2.077 m

Magnetic Declination -----
 Declination applied to this figure?
 Yes No

Locality



Sketched by: Usman Mohamed

Scale: Not to scale

Date: 30th May 2012

Maldives Land and Survey Authority,

MINISTRY OF HOUSING AND INFRASTRUCTURE

Ameenee Magu, Maafannu, Male', 20392, Maldives.

Office (PABX): +(960) 3004300, Fax: +(960) 3004254

Email: survey@mhe.gov.mv

Web: www.surveyofmaldives.gov.mv, www.mhe.gov.mv



CONTROLPOINT DETAILS		Station Number 5095	
Coordinate Information			
Geodetic		Grid	
WGS 84		UTM Zone43	
Lat: 3°38'42.36934"N		E: 331964.8325m	
Long: 73°29'13.36321"E		N: 403039.8849m	
Ellp Height: -92.371		Orth Height: 1.431	
Island Name: Dhiggiri		Date: 30 th May 2012	

Monument description & method of survey:

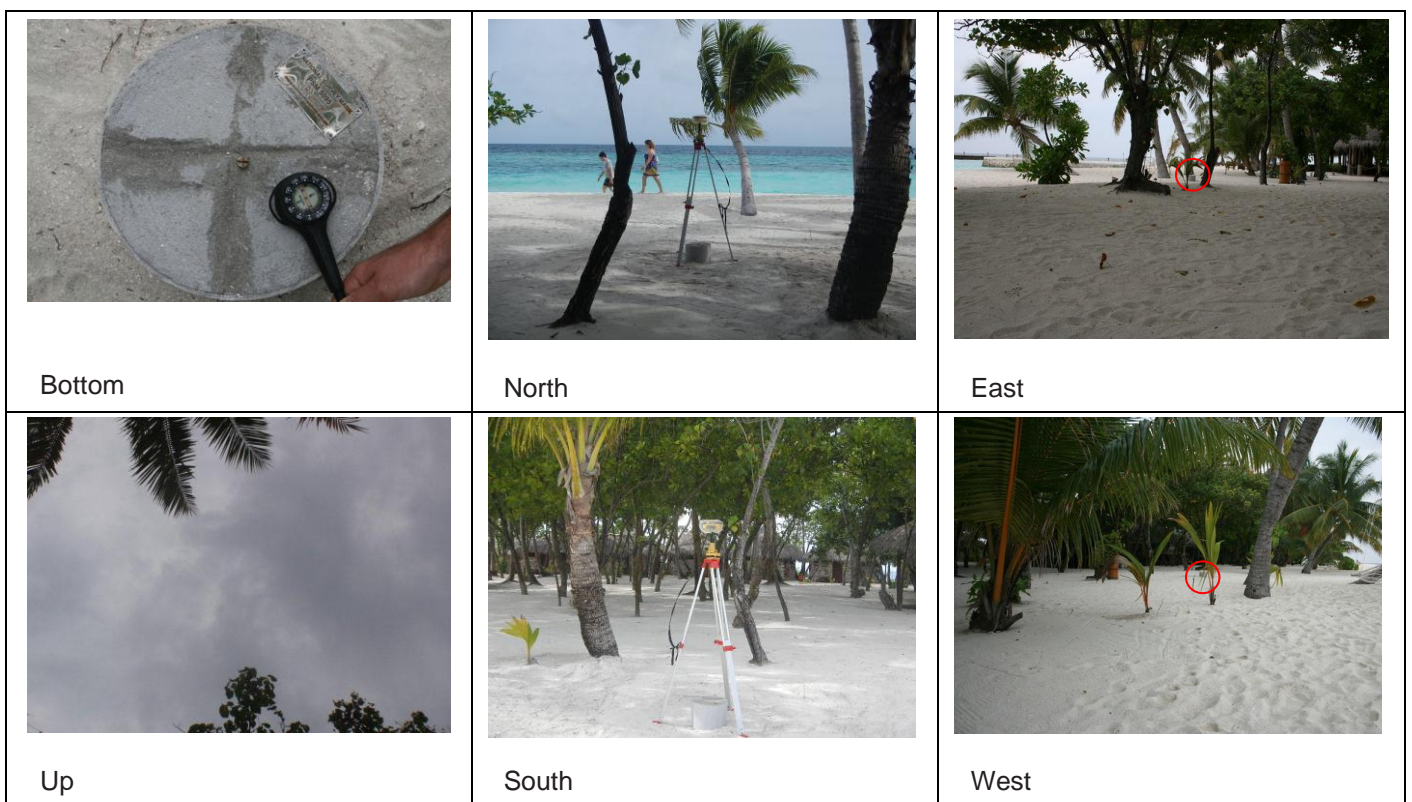
PSM type: PSM type A (finish level approx. 150mm above ground level)

PSM was established using Topcon HiperII DGPS system. Static survey method was used for establishing the horizontal coordinates. Three PSM were set at site and data collected for three triangles. Approximately 6hrs 01min of data collected for line PSM 5094-5095, 1hr 53min for line PSM5095-5096 and 2hrs 02mins for the line PSM5094-5096. Correction and adjustment are made using Topcon Tools software. MSL established by transferring level from PSM5094 as part of level run.

General site condition & access:

The PSM 5095 is located at the northern side of the island close to the bar facility; the PSM located near the edge of vegetation. The PSM5095 is in line of sight to PSM5094. The PSM can be accessible from the beach. Sky view is clear of obstruction apart from South (obstructing at 60° elevation angle), East (obstructing at 40° elevation angle) and Western side (obstructing at 40° elevation angle).

Owner: D.I Resorts Pvt Ltd. The resort management takes full responsibility for safeguarding the PSM.

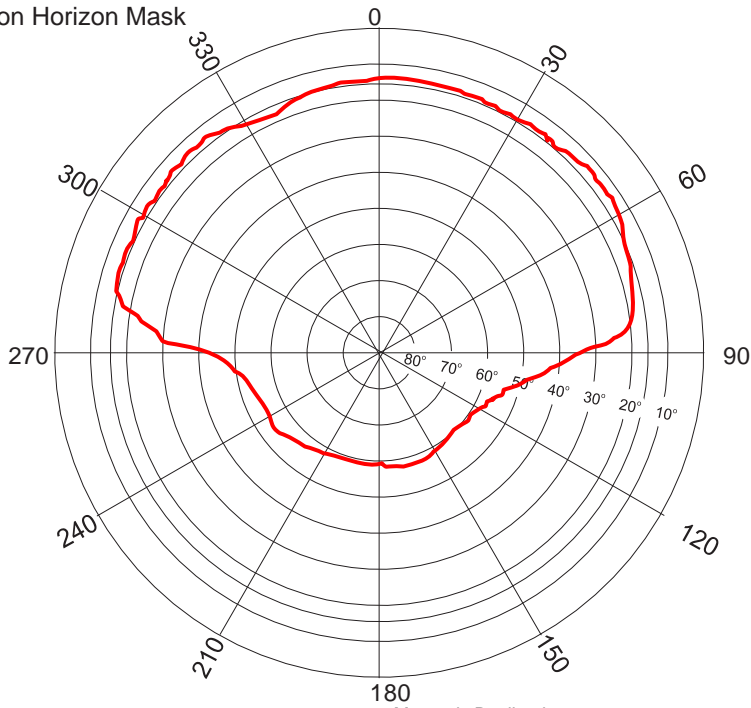


SITE INFORMATION

Station Number

P	S	M	5	0	9	5
---	---	---	---	---	---	---

Station Horizon Mask

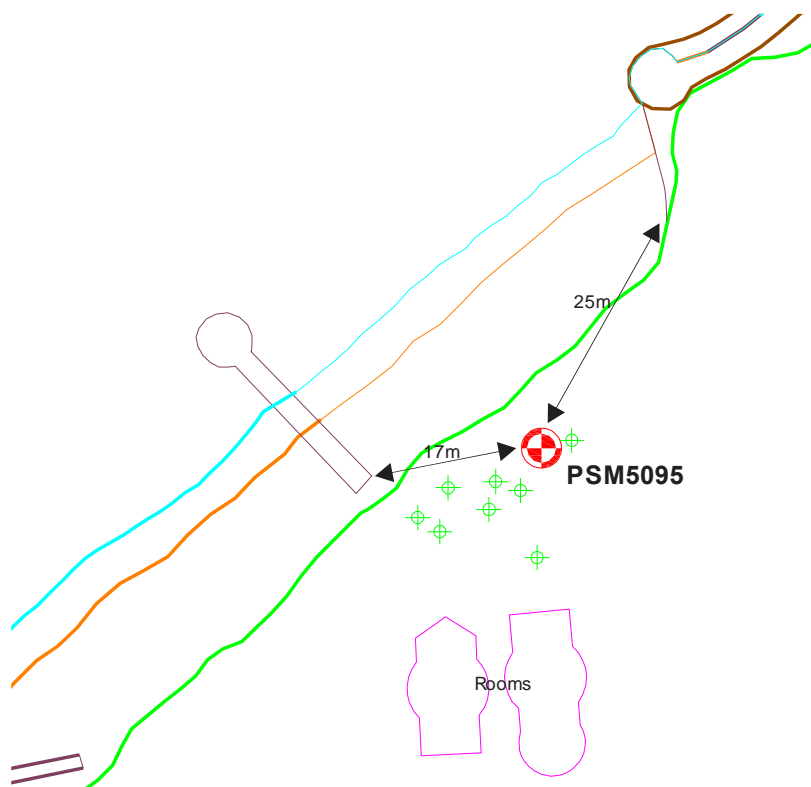


Height above Marker that horizon was mapped from 1.516 m

Magnetic Declination -----
 Declination applied to this figure?
 Yes No



Locality



Sketched by: Usman Mohamed

Scale: Not to scale

Date: 30th May 2012

Maldives Land and Survey Authority,

MINISTRY OF HOUSING AND INFRASTRUCTURE

Ameene Magu, Maafannu, Male', 20392, Maldives.

Office (PABX): +(960) 3004300, Fax: +(960) 3004254

Email: survey@mhe.gov.mv

Web: www.surveyofmaldives.gov.mv, www.mhe.gov.mv



CONTROL POINT DETAILS		Station Number 5096
Coordinate Information		
Geodetic	Grid	
WGS 84	UTM Zone 43	
Lat: 3°38'42.80906"N	E: 332084.7773m	
Long: 73°29'17.24943"E	N: 403053.1893m	
Ellp Height: -92.893	Orth Height: 1.269	
Island Name: Dhiggiri	Date: 30 th May 2012	

Monument description & method of survey:




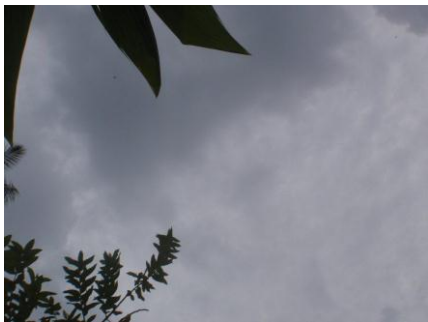


PSM type: PSM type A (finish level approx. 150mm above ground level)

PSM was established using Topcon HiperII DGPS system. Static survey method was used for establishing the horizontal coordinates. Three PSM were set at site and data collected for three triangles. Approximately 6hrs 01min of data collected for line PSM 5094-5095, 1hr 53min for line PSM 5095-5096 and 2hrs 02mins for the line PSM 5094-5096. Correction and adjustment are made using Topcon Tools software. MSL established by transferring level from PSM 5095 as part of level run.

General site condition & access:

The PSM 5096 is located near the east side of the island facing south east; just in front of BoH quarters gate close to the senior staff accommodation. The PSM 5096 can be accessed from the walkway leading to the BoH. Sky view is clear of obstruction apart from South East, South and Western side (obstructing at 45° elevation angle)

Owner: D.I Resorts Pvt Ltd. The resort management takes full responsibility for safeguarding the PSM.

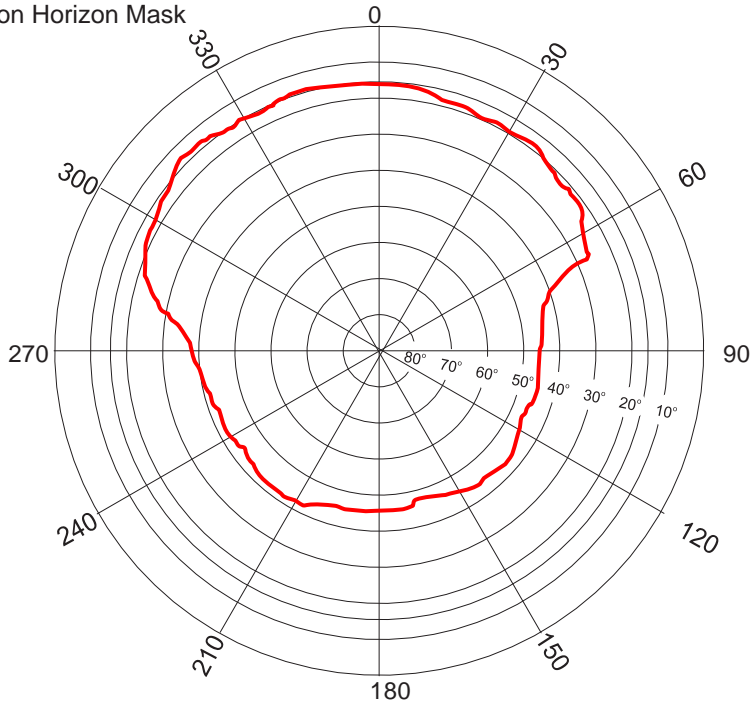
		
Bottom	North	East
		
Up (Camera placed on top of PSM)	South	West

SITE INFORMATION

Station Number

P	S	M	5	0	9	6
---	---	---	---	---	---	---

Station Horizon Mask



Height above Marker that horizon was mapped from 2.077 m

Magnetic Declination -----
Declination applied to this figure?
 Yes No

Locality



Sketched by: Usman Mohamed

Scale: Not to scale

Date: 30th May 2012